

The Clayhill Farms CSA Program 2009 Agreement and Registration Form

We are now registering members for the 2009 season. Please read our Grower Agreement and complete our Registration Form. If you have any questions, you can call us at: 757-613-3741 or email us at: clayhillfarmscsa@yahoo.com

Mail these forms in with your deposit, or full payment to:

**Clayhill Farms
c/o: 2009 CSA Program
5165 Mineral Spring Road
Suffolk, VA 23438**

Clayhill Farms Community Supported Agriculture (CSA)

Subscriber - Grower Agreement 2009

Subscribers will receive a box of produce each week of a 20 week season, running from June 8, 2009 to October 20, 2009. The assortment of produce will vary throughout the season and contain a wide variety ranging from sweet corn to tomatoes, peppers to cantaloupe, basil to peaches. Due to the unpredictability of farming, we cannot guarantee any specific item. We do not customize individual boxes.

1. Subscribers may purchase a Regular Share (average \$25 worth of produce per week) or a Smaller Household Share (average \$18 worth of produce per week). A subscriber may elect to pay the full amount at registration, or make a deposit at registration with the full balance due by June 8, 2009. A deposit of \$150 is required at sign up.
2. Subscribers are responsible for picking up their boxes at one of the designated pickup points (specific locations to be communicated later). Subscribers are encouraged to find friends or family to pick up their share if they will be away.
3. Pick up points are planned for the Hampton Roads Area. Other locations in the vicinity may be established as demand warrants.

This agreement represents a season-long contract; if for any reason a member must end their subscription, Clayhill Farms will transfer your share to an individual of your choice. If for any reason, a member is unable to pick up their weekly share, arrangements should be made to have someone else pick up the share, or the share will be donated to the local communities in need.

Signature: _____

Date: _____

Clayhill Farms Community Supported Agriculture (CSA): 2009 Registration Form

Name: _____

Office Address: _____

Email 1: _____ Email 2: _____

Day Phone: _____ Evening Phone: _____

1. Our Subscription Choices (Please check all options that apply):

- Regular Subscription (20 weeks x \$25.00 per week) = \$500.00 x _____ number of shares
 Smaller Subscription (20 weeks x \$18.00 per week) = \$360.00 x _____ number of shares
 My total subscription payment will be: \$ _____

2. Please select the Payment Plan of your choice and attach your payment.

2A. Partial Payment Enclosed:

- I have enclosed the \$150.00 deposit for: Regular Subscription (\$150.00 now; \$350.00 by June 8)
 I have enclosed the \$150.00 deposit for: Smaller Subscription (\$150.00 now; \$210.00 by June 8)

2B. Regular Subscription Payment (paid in full):

- I have enclosed the entire payment of \$500.00

2C. Smaller Subscription Payment (paid in full)

- I have enclosed the entire payment of \$360.00

3. I prefer to pick up my share at the following location, exact location to be announced:

- Suffolk, VA: Harborview Community
 Suffolk, VA: Governors Point Community
 Suffolk, VA: Pitch Kettle Point
 At Clayhill Farms (Suffolk, VA)
 I am interested in hosting a drop off point at my workplace or home (Hampton Roads Area only) for a minimum of 30 subscribers from 4pm to 7pm on weekly delivery days. Please contact me.

Email: _____

Phone: _____

****Please note:** If your drop off point is selected, you'll receive 50% off your CSA subscription price!

4. Check the following:

****Please note:** Member Appreciation Date and Time, To Be Announced (TBA).

- Yes, I plan to attend the Member Appreciation Day-CSA members only open house & farm tour.
 No, I do not plan to attend the Member Appreciation Day-CSA members only open house & farm tour.

Contact us for more information:

Call Edmond, Janice or Anson at Clayhill Farms CSA: 757-613-3741

Email us at: clayhillfarmscsa@yahoo.com

Thank you
for supporting
Virginia's Family Farms!



What is CSA, Anyway?

The Community Supported Agriculture (called CSA by many folks) movement began four decades ago in Japan, when young mothers wanted healthy & safe food from local farmers they knew! In Japan this community connection was called "Tettekai," this means "Food with a Face." This grass roots movement has been adopted in the United States and over 2,000 small family farmers are sustained by the economic and social benefits of CSA.

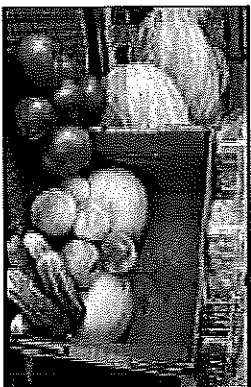
Community Supported Agriculture is a direct marketing connection between local farmers & consumers who care!

How does CSA Work?

In a CSA, you have the opportunity to pre-purchase a share of the harvest before the growing season begins. It works just like a subscription to your favorite magazine!

You pay for your farm food delivery before it is harvested, relax and then enjoy the food when it is delivered to you during the growing season!

Your pre-purchase helps your farmer with the substantial start up costs each crop season, for example: buying equipment, seeds and supplies. In return, you will receive farm fresh, locally grown vegetables, fruits & herbs from the farmer you know and support.



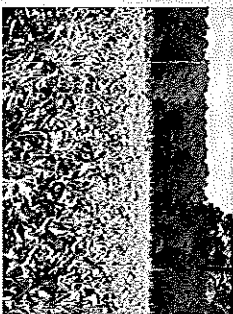
sample regular share

Why should you be a CSA Member?

- ☑ Eat Fresh Farm Food!
- ☑ Know the Person who grew your Food!
- ☑ Be involved in your Community!

Who We Are & Why try CSA with Us?

Clayhill Farms is a sixth generation family owned and operated local farm, located in Suffolk, VA which is in the heart of Hampton Roads. We have been able to stay in business by offering only the best and



fields of succulent sweet corn

freshest produce to our customers. We have been selling our fresh farm products for over a decade, and this year we are proud to offer our delicious, nutritious and local produce to our farm friends, in a new CSA subscription format. This just means that you can have the ease and convenience of enjoying a variety of fresh-picked, premium quality, local produce items delivered to your neighborhood or workplace. You can pick up at our farm, too.

Your 20-week subscription share will be gently hand-packed in a box, every week from June 8 to October 20, 2009.

We hope you'll join our Community Supported Agriculture subscription program. By doing so you are making a clear statement to your friends and family that you care about this planet and the food you put in your body. You are reaching out to small farms in Virginia and helping small farms to keep the land in farming! We are so thankful for the opportunity to be a part of your family's harvest! In 2009, we are offering 100 "share of the harvest" subscriptions of delicious Clayhill Farms freshly-picked produce.

How our CSA Program works

Share Subscription:

We offer two produce subscription choices:

Regular: Feeds 2 adults, 2 children: \$500.00
Smaller: Feeds 2 adults: \$360.00

Payment Plan:

You can pay in full, or you can pay the \$150.00 deposit at sign up, and the remainder on or before June 8, 2009. You can pay by cash, or check written to: Clayhill Farms. It's up to you!

What can I expect?

Expect from 7 to 10 different items in your share box each week! You will receive enough of each item to feed your household for the week. See our harvest table (on back of brochure), to see a list of crops we are planting and when they are expected to be ripe for harvest. During our harvest season (June 8 to Oct 20), you will have the opportunity to enjoy a great variety of farm-grown products.

We know you'll enjoy eating what's in season! Look forward each week for easy to prepare recipes from Clayhill Farms members and neighbors. We have some wonderful cooks in the family and we will help out by making some serving suggestions based on the produce that's in your box that week.

It's easy to join Clayhill Farms CSA! Fill out the enclosed sign up form, attach payment, and send it to us to reserve your 2009 subscription! Our family looks forward to serving you in 2009!

Contact Us!

Edmond, Janice & Anson Morris
Clayhill Farms CSA
Phone: 757-613-3741
Email: clayhillfarmscsa@yahoo.com